



Ridge Meadows Recycling Society

Recycling Report

DECEMBER, 2014

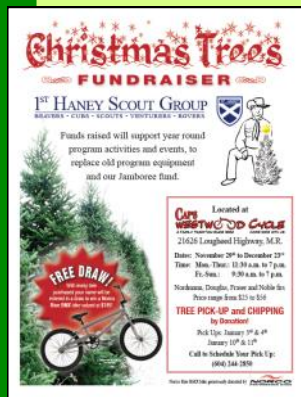
INSIDE:

RMRS Board Member Sandy Sigmund finds reasons to rejoice

Page 2

RMRS Executive Director Kim Day takes a look at the Year in Review

Page 3



REJOICE! It's the Holidays!

This year, if your recycling pickup is on **THURSDAY**, there is a special **Saturday, December 27** pickup just for you! Thursday pickup residents can set out their recycling by 7:00am on December 27 and it will be picked up.

Have you made the switch to environmentally-friendly LED Christmas lights? In addition to being able to drop your old ones off anytime at the Recycling Depot, this holiday season there will be free drop-off bins for your old lights at the Maple Ridge Leisure Centre and the Pitt Meadows Family Recreation Centre.

Participants in this year's Waste Reduction Challenge, the 1st Haney Scout group, are now selling Christmas trees 7 days a week in the parking lot of Cap's Cycles at the corner of Lougheed Highway and 216th. When the holidays are over, trees can be brought for chipping (by donation) to Ridge Meadows Search & Rescue next to Planet Ice from 9am-4pm on the weekends of January 3rd/4th & 10th/11th.

The Scouts are providing a curbside pick-up service for trees to be chipped as a fundraiser – email them at scotchipping@gmail.com or phone 604-244-2850. Minimum recommended donation for pickup is \$10. Come support our eco-youth!

Did you know the **Recycling Depot** now accepts over 200 items? This means if Santa brings you a new cell phone, electronics, appliances, or a new computer, you can recycle the old ones for free at the Depot. PLUS, there is also free Depot drop-off for the Styrofoam, cardboard, and plastic packaging it came in!

2014 Holiday Recycling Schedule



Residents with **THURSDAY** recycling pickup:

Thursday, December 25
pickup moved to
Saturday, December 27

Regular Thursday pickup resumes January 8

There will be **NO BLUE BOX PICKUP** and the Maple Ridge Recycling Depot will be **CLOSED** on:

Thursday, December 25,
Friday, December 26, and
Thursday, January 1 (2015)

The Maple Ridge Recycling Depot will be **CLOSING EARLY AT 3:00pm** on Christmas Eve (Wed, Dec.24) & New Year's Eve (Dec.31)



*Happy Holidays from
Ridge Meadows Recycling!*
www.rmrecycling.org



Tips on having a Green Holiday Season
Pages 1, 3, & 4

Congratulations to the new Maple Ridge & Pitt Meadows Mayor & Councils.

We look forward to working with you to reduce waste in 2015!



Sandy Sigmund,
Board Member, RMRS

Sandy Sigmund on how everyday efforts lead to extraordinary results

Sandy Sigmund is the Vice President & Chief Marketing Officer of Encorp Pacific Canada. Sandy is a BCIT graduate in Marketing and Business Administration and holds a certification from the Institute of Corporate Directors, UBC in Governance for Directors of Not-for-Profit Organizations. She has previously sat as a board member for RCBC and served on the governance and policy committees. Sandy also sat on the Board of Directors of the Burnaby Board of Trade, serving on the Environmental Sustainability Committee and sat as Chair of the membership committee. She has lived in Maple Ridge since 1994.

Recycling has become second nature. Through blue box, bin or bag collection, citizens have participated across the province and Maple Ridge has proven to be an exemplary example of this effort. People no longer view recyclables as garbage, but as valuable resources. The positive effects, from reducing greenhouse gasses, to protecting our natural resources, are spurring on their efforts.

In fact, citizens are so committed to recycling that we have to change the way we record its success. There is less waste (per person) to process and in some cases we are now receiving less recycling as well, not because of lack of participation, but because people are taking the reduce, reuse and recycling hierarchy very seriously.

Producers are now eager to reduce the amount and cost of product packaging, and are making real efforts to design products to be easier and safer to recycle. These improvements have been featured in almost all large companies' annual reports, and in most reports the claims are properly audited. Their desire to appeal to conscientious consumers has inspired businesses to genuinely step up to their environmental responsibilities.



"Citizens are so committed to recycling that we have to change the way we record its success."

We have moved away from taxpayer funded recycling programs, to those financed by industry and implemented through extended producer responsibility (EPR) programs where the user pays for the recycling of the products they purchase. Eco-friendly companies are rewarded with more business. You are voting with your wallets, people!

Looking forward, we still need to encourage more businesses in our community to get involved. Some have no mandatory recycling in place and are still sending resources into the garbage.

We need to work with these companies to help and encourage them to set up better practices.



Protecting our environment is a mammoth task, but the everyday actions of individuals add up to real change. For every time you recycled and wondered if it made any difference, be proud to know how much your actions have accomplished.

Photos of beverage container bales courtesy of Sandy Sigmund

A look back at 2014 by Kim Day, RMRS Executive Director

The biggest change for us in 2014 was definitely the roll-out of the new Printed Paper and Packaging stewardship program under Multi Materials BC. While there wasn't too much change for Maple Ridge residents (besides being able to recycle new items like aerosol cans and additional plastics), for us it included redesigning the Recycling Depot to keep Curbside Blue Box, Depot drop off, and Commercial loads separate. It also meant our two summer students visited nearly 10,000 homes and close to 200 apartment buildings throughout Maple Ridge to drop off new sort flyers. For the most part, the program has now been integrated with the other recycling stewardship programs we take part in and people are happy to learn that Styrofoam drop off at the depot is now free.



RMRS Board Member Dennis Kinsey & Executive Director Kim Day at Earth Day 2014: Food for Thought

In April we were the lead coordinators on another successful Earth Day event, this one celebrating "Food for Thought" and the 10th Anniversary of the Haney Farmers Market. In addition to our annual activities, the special art performances through the MR Community Art Grant, Stone Soup and Iron Chefs Chili Cook-off events were VERY appreciated.

We took part in many other events in 2014 including:

- Maple Ridge Teacher's conference
- Ridge Meadows Home Show
- LAST Committee's Transition Fair, Community Living Month BBQ, & Rotary at Work Event
- Haney Farmers Market: MR Concert Band's 20th Anniversary & Brookfield Farm location
- mall displays at Haney Place & Valley Fair Malls
- Maple Ridge Social Media Day
- Canada Day
- Caribbean Festival
- Communities in Bloom
- Bard on the Bandstand
- GETI Fest
- Rivers Day



Maple Ridge Mayor & Council, local Guide & Scout Groups, & RMRS Board Members at the Waste Reduction Challenge Badge Presentation

Local Guide & Scout groups have been having a great time earning our Waste Reduction Challenge badge. It was wonderful to see their enthusiasm at our presentation to Maple Ridge Mayor & Council on Tuesday, October 28.

With over 750 members and over 1000 residents on our newsletter mailing list, Ridge Meadows Recycling is alive & well. We look forward to seeing what 2015 has in store with Metro Vancouver's Organic Waste Disposal Ban, Celebrate Earth Day exploring "Water, Water Everywhere" on April 18, and our plan to "Unveil the (New) Baler" for our (New) Mayor & Council early in the new year.

It's Easy to be Green at Christmas!

While the holiday season often tends to be a crazy rush, here's hoping the rush doesn't lead to more waste...

"Once people get into the Christmas rush, they tend to trade sustainability for convenience," says Kim Day, Executive Director of Ridge Meadows Recycling, "If you plan ahead to 'Make Memories, Not Garbage,' you can focus on the things that matter, not just things."

...continued on next page



Easy to be Green at Christmas (..continued)



- Making a list of people you want to give gifts to in advance can help you think outside the box:
- courses, classes, or workshops will teach a new skill AND give the gift of time to focus on learning
 - tickets to a play, movie, speaker series, or concert are gifts that delight when they're given and when the event takes place
 - homemade crafts or the offer of time babysitting, dog walking, or sharing one of your skills is a lovely way to show you care
 - holiday baking or appetizers are ALWAYS a welcome treat and can save the recipient time & money while hosting a holiday event.

When wrapping gifts, use cloth or paper gift bags that can be used over & over or use cloth gifts such as tea towels, new dish cloths, clothes, etc. and ribbon as wrapping for other gifts. Other ideas include using children's artwork for wrapping special gifts or giving gifts that don't need wrapping like gift certificates or tickets. If you *do* use wrapping paper, pay attention to what kind you buy – **plastic gift wrap or foil printed paper is NOT recyclable**. Only buy paper wrap that can be put in the blue recycling bag. When UN-wrapping gifts, pay attention to what will happen to the gift wrap. If you unwrap presents carefully, most wrap can be reused for many years to come. Remove ALL ribbons, bows, and other decorations to store and use again next Christmas. Sort PAPER wrap into Blue Recycling Bag.

Remember that mixing plastic & foil print wrapping paper, bows, and ribbons in with your paper wrap makes it difficult (if not impossible) to recycle the paper wrap. The paper manufacturers cannot accept loads with a high level of contamination and unfortunately mixed loads sometimes end up in the dump. Taking the time to sort out these non-paper items means the paper can actually be made into new paper products.



**Christmas lights are accepted at the Recycling Depot*

Mission Statement

"Ridge Meadows Recycling Society is a community-based, non-profit organization, advocating zero waste, operating responsible waste reduction services and providing environmental education. We employ people with developmental disabilities assisting their integration into the community."

Vision

"A waste free, socially responsible community."



Box 283 - 10092 236th Street,
Maple Ridge, BC V2X 7G2
604-463-5545

www.rmrecycling.org

