



Dennis Kinsey, Board Member, Ridge Meadows Recycling Society

Dennis Kinsey addresses the most important “R”

Dennis Kinsey has lived in Maple Ridge with his wife Sandra and 3 sons for over 15 years. Dennis has been actively involved in environmental issues since 1984. He has served on the Board of Directors of RCBC and Encorp Pacific and was the chairperson for the Canadian Council of Grocery Distributors National Environmental committee. Locally he served on the Maple Ridge Economic Advisory Committee. Among many varied projects, Dennis was actively involved in encouraging retailers and brand owners to take full life cycle responsibility for the products they sell.

I have been involved in the environment and sustainability field for longer than I care to admit. Over the years one of the key themes of sustainability is that we have an obligation to leave the earth a better place than we inherited it, that we in fact don't own the earth, we are merely renting it for a period of time. As I reflect back on my 33rd Father's Day (My wife and I have 3 sons, 3 beautiful daughters-in-law, and 3 incredible grandchildren with number 4 on the way), I have to admit that I am probably more cynical now than I have been in sometime.

By now most people have heard of the newest stewardship program, Multi Material BC (MMBC). If no, I would suggest you check out their website as this stewardship program will have a major influence on consumers for some time to come.

While stewardship programs go a long way in helping to recover end of use products and now packaging, they still do little or nothing to address the key environmental issues that confront us today as they did 30 years ago, and unfortunately MMBC is no different. Industry stewardship programs are monopolies that kill creativity and innovation. Small business and innovation have little or no role to play in these programs. They are meant to be one-stop solutions

Unfortunately nothing I see happening with stewardship has changed from a national retailer brand owner meeting I attended in Montreal almost 30 years ago. I remember a representative of a major company say that we have to implement programs that while on the surface appear to address consumer environmental concerns, but we have to be careful as the last thing we want is for them (consumers) to think about the type of packaging we use. With the amount of waste I still see on a daily basis, I fear they have accomplished their goal

*“We are now having to face the greatest challenge of all ...
reduce”*

While there have been some great success stories in addressing two of the 3Rs (reuse and recycle), we are now having to face the greatest challenge of allreduce!

This Father's Day I will try and shrug off my cynicism and will look at my children and grandchildren and will remember why I got into this industry in the first place and continue the work and vision of the founders of Ridge Meadows Recycling Society and continue the good fight.

REDUCE your impact (...continued from Page 1)

It might be tempting to say that one person changing their actions isn't going to change anything. But wasn't that how this all started? “One cup in the ocean won't change anything.” “One bottle in the garbage won't change anything.” But of course, little by little, they changed things and we will be dealing with that for years and decades to come. Why can't things go the other way too? If that item we pick up in the store is really so unimportant, it hurts nothing to put it back and move on. But the oceans will thank you for it.

How big is your Footprint?



Want to see how many planets it would take to maintain your current lifestyle? There are a number of online, 5-minute surveys showing how your living habits make up the size of your ecological footprint, taking into account things like food, home, travel, & stuff.

“Everyday choices we make, such as how often and how far we drive our cars, buying our food or turning up our thermostat one degree more when it’s cold, when combined have a big impact on the environment on a global scale. This contributes to climate change, species loss and destruction of the world’s forests. WWF (World Wildlife Fund)’s Footprint calculator shows how making little lifestyle changes can have a huge environmental impact and help people tread more lightly on the Earth” said Rachel Bloodworth, Head of Public Engagement at WWF-UK.

Measure your footprint at <http://wwf-footprint-staging.torchboxapps.com>



Our Board Members get Oriented with the Depot!



As part of their annual Orientation, Ridge Meadows Recycling Board Members are given a tour of the Maple Ridge Recycling Depot located at 10092 - 236th Street, just off River Road in the Albion Industrial Park.

Free Depot Tours for classes and community groups can be booked by contacting Dan Mikolay, our Environmental Educator, at 778-773-8040 or emailing daniel@rmrecycling.org

Welcome Gina!

*Thanks to the Summer Jobs Grant, Ridge Meadows Recycling has hired two students to help us promote MMBC's changes to the recycling program. Our second student, **Gina Seki**, started at the end of May. You may see Gina or Ash out & about this summer visiting homes & apartments, handing out flyers, at events, or at a mall display near you!!*



I am so happy to be working with so many amazing individuals throughout the community! Born and raised in Maple Ridge, some of my earliest memories are coming down to the depot and transfer station as a child. I am happy to have the opportunity to broaden my knowledge of the system, and contribute to the changes that work towards more sustainable living.

Since the day I could walk I was already playing in my backyard ravine, climbing trees, and adventuring through the forest beside my house, intrigued with every different plant and insect. Starting September, I will be attending the University of Victoria, focusing on environmental sciences. To this day I still love working outdoors and enjoying the beauty of British Columbia's wildlife, and one day I hope to contribute to the preservation of it.

RMRS has given me that “foot in the doorway” to my ideal future career, as well as many opportunities to be involved in the community. I look forward to spending my summer collaborating with the community, meeting people, and working with such a fantastic crew.

Catch Ridge Meadows Recycling at these Upcoming Events...



Recycling Display at Valley Fair Mall

Saturday, June 21, 9:30am—5:30pm

Spreading the word about MMBC changes to our recycling program.

Canada Day

Tuesday, July 1 - Maple Ridge 10am-3pm at Memorial Peace Park

Celebrate Canada's Birthday with a great party in Maple Ridge!



Recycling Display at Haney Place Mall

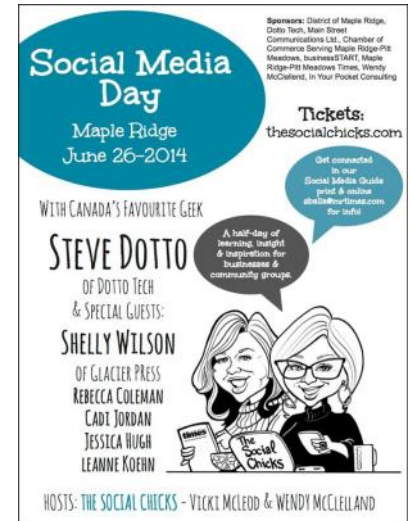
Saturday, July 12, 9:30am—5:30pm

Spreading the word about MMBC changes to our recycling program during the Caribbean Festival!

Social Media Day in Maple Ridge - Hosted by The Social Chicks

Thursday, July 26, 9am—1pm at the Maple Ridge Municipal Hall

Ridge Meadows Recycling's Communications Manager Leanne Koehn is a presenter at this event! Tickets via **The Social Chicks** - online or on Facebook



Bard on the "Much Ado About Nothing" at Bard on the Bandstand

SHAKESPEARE IN SPACE!!!



Pitt Meadows' Spirit Square: July 17-19 (Thurs-Sat) 8pm, & July 19 (Sat) 1pm.

The Maple Ridge Bandstand: July 24-26 (Thurs-Sat) 8pm, & July 26 (Sat) 1pm.

Don't miss the Emerald Pig Theatrical Society's annual FREE Shakespeare in the Park -

RMRS will be creating a space-themed kids' craft starting 1 hour before the matinee & evening shows on **Saturday, July 26 (Closing Night!)** www.emeraldpig.ca

Mission Statement

"Ridge Meadows Recycling Society is a community-based, non-profit organization, advocating zero waste, operating responsible waste reduction services and providing environmental education. We employ people with developmental disabilities assisting their integration into the community."

Vision

"A waste free, socially responsible community."



Box 283 - 10092 236th Street,
Maple Ridge, BC V2X 7G2
604-463-5545

www.rmrecycling.org

